

Breakout Session





Richie William
Great Ormond Street Hospital 1997

E3

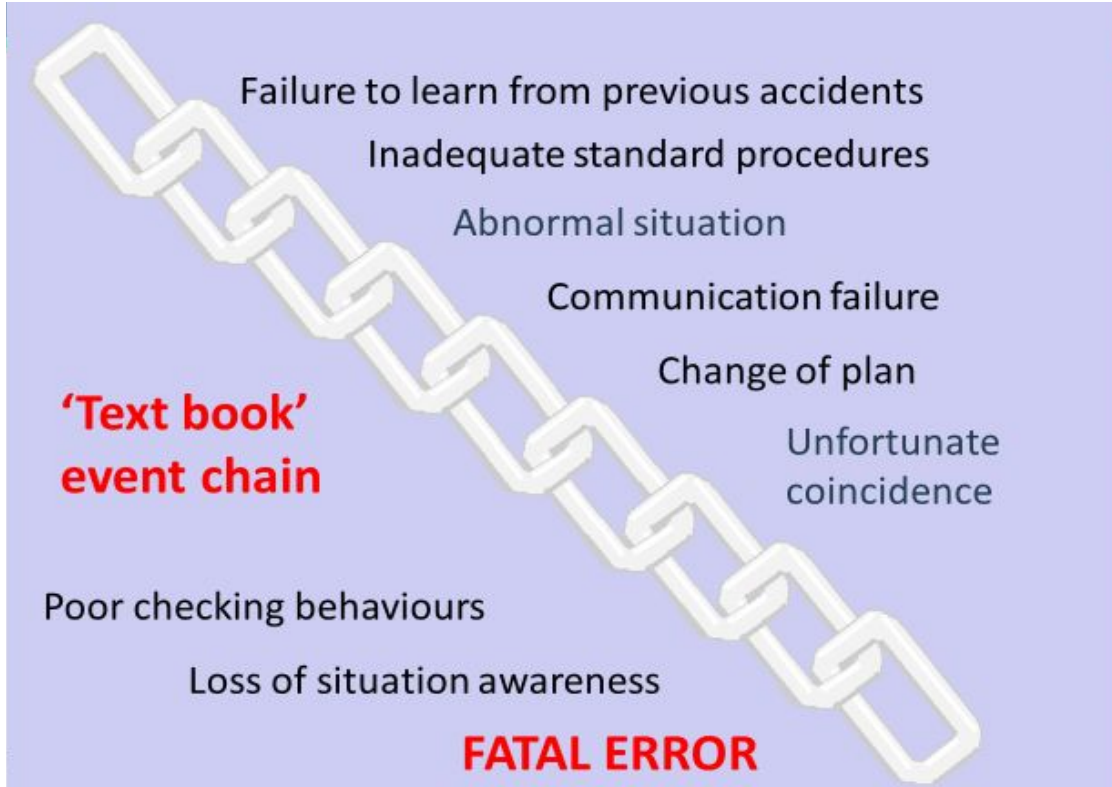
Latent and Active Error

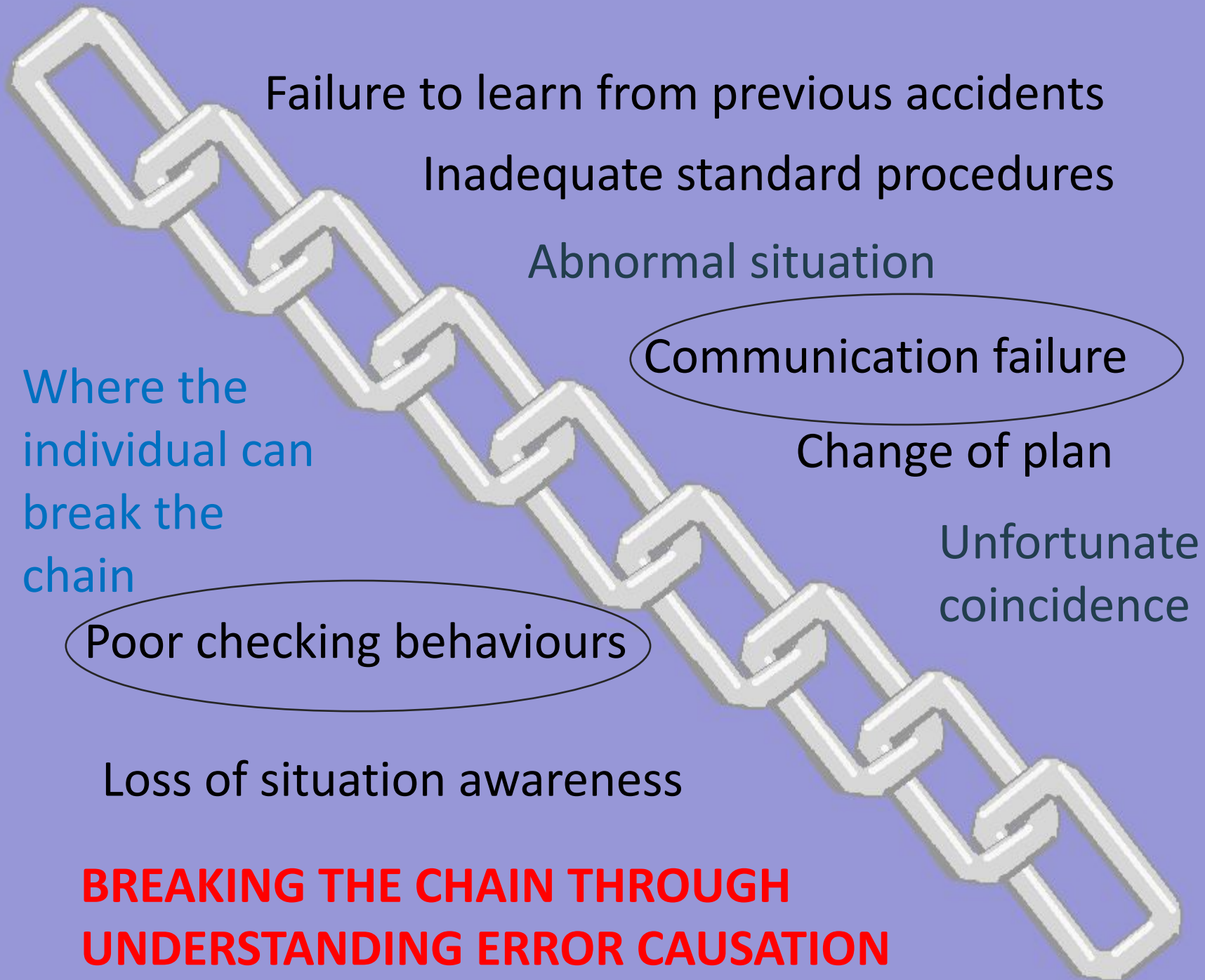
Latent error- Long term situations which induce human error or inhibit error detection or prevention. These are usually associated with **poor management/lack of SOP/equipment design**

Active errors - Errors and violations committed at the "sharp end" of the system - by pilots, air traffic controllers, doctors, nurses, ships' crews etc. Such unsafe acts are likely to have a direct impact on the safety of the system.

Error Chains



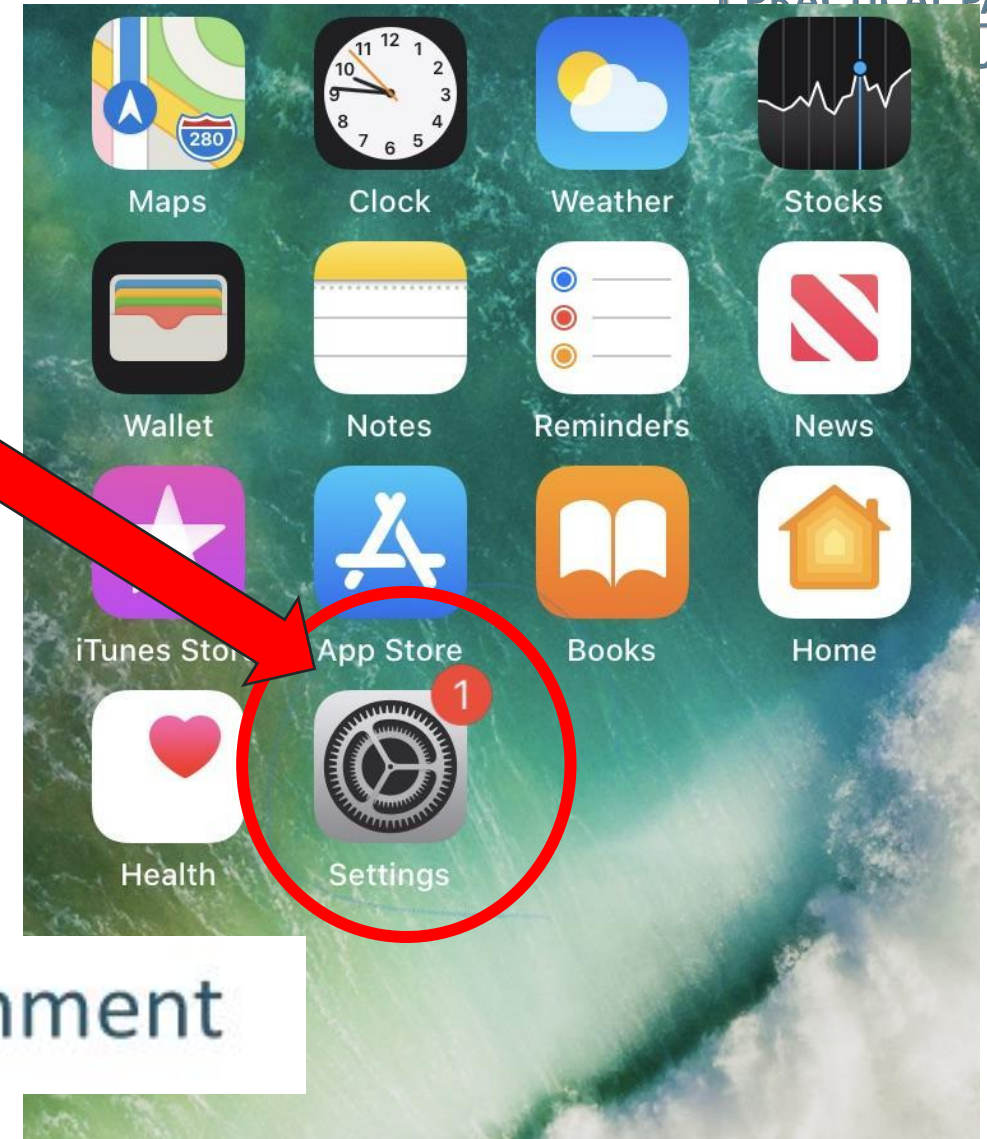




**BREAKING THE CHAIN THROUGH
UNDERSTANDING ERROR CAUSATION**

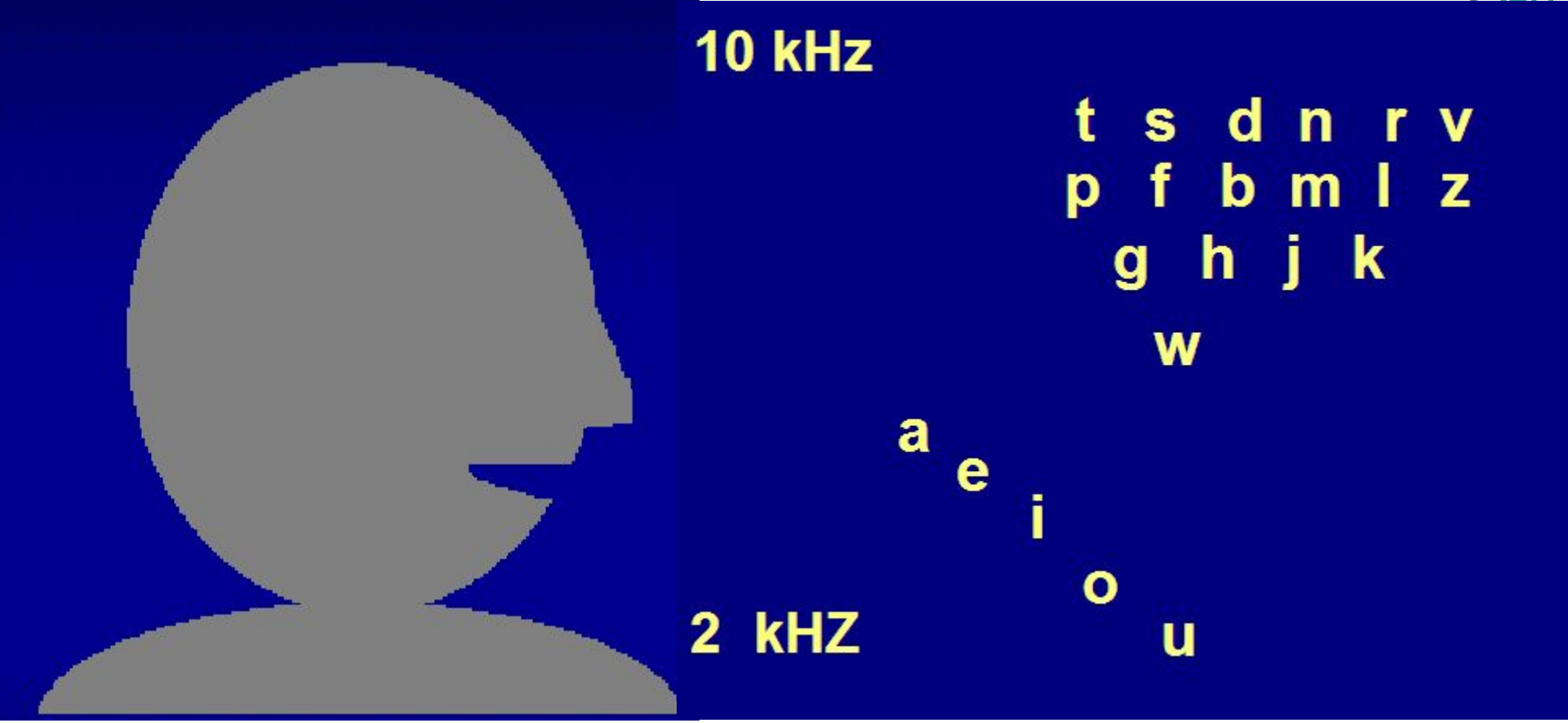
A few pitfalls to be aware of

Our problem in “Settings”



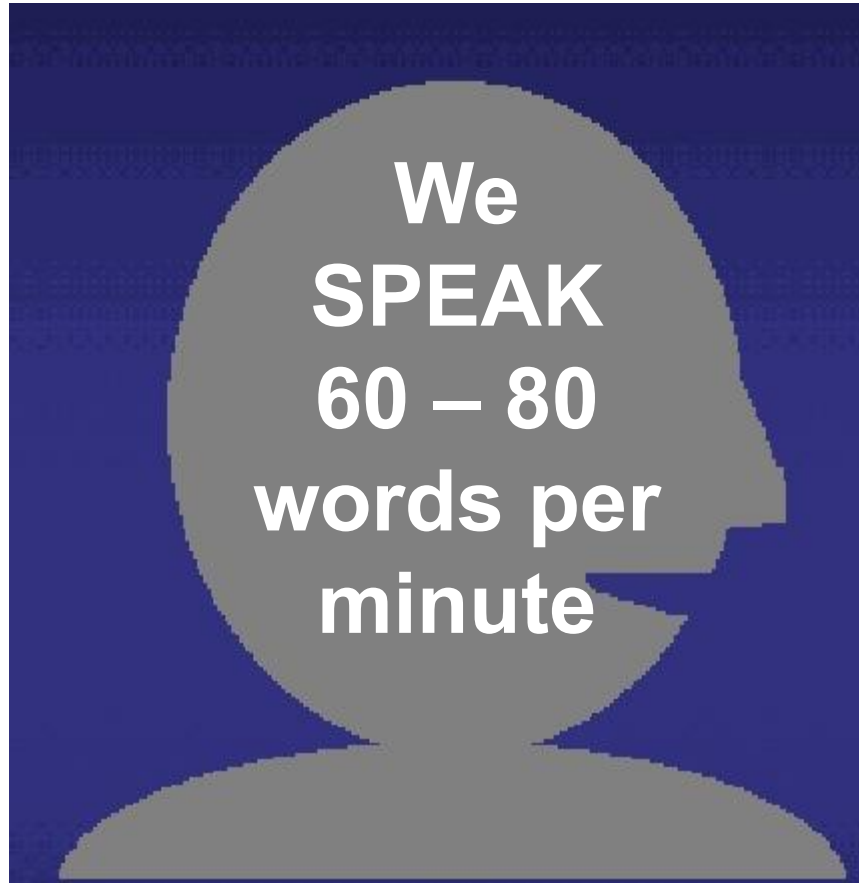
Environment

Normal voice sound bandwidth

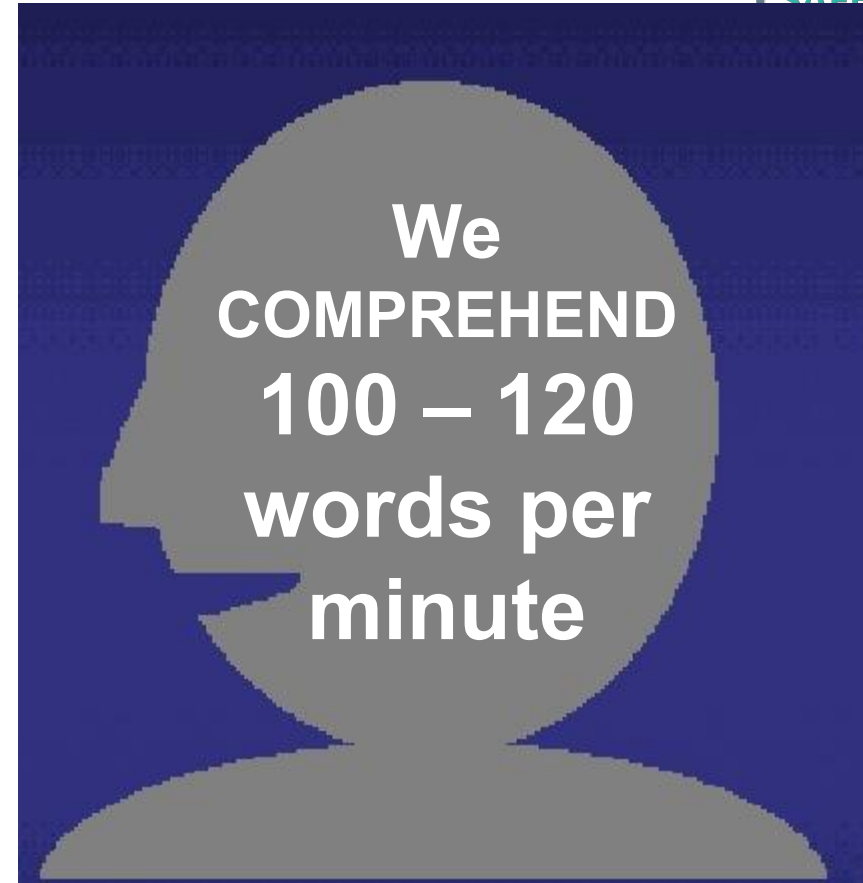


H7

What could go wrong?



but





This is part
number 4042808
isn't it ?

Yes



What does this
say ?

It says part
number 4024808

Checking procedures are explicit and can sound confrontational

C11b

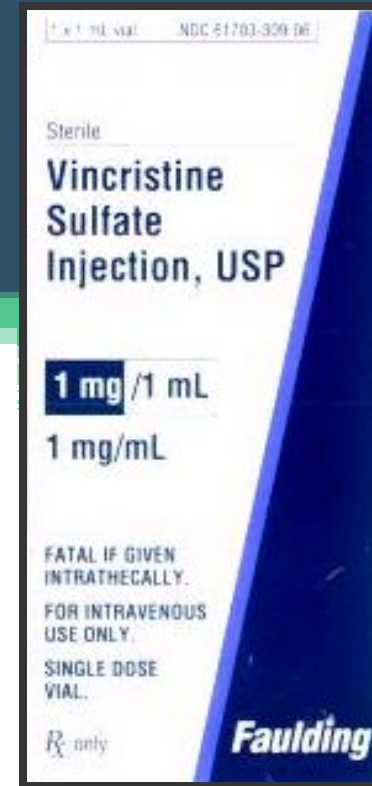
Case Study: Vincristine

Two drugs are given when treating
Acute Lymphoblastic Leukaemia

Intrathecal



Intravenous



NB

We will never know the exact conversation which happened on that day of this incident.

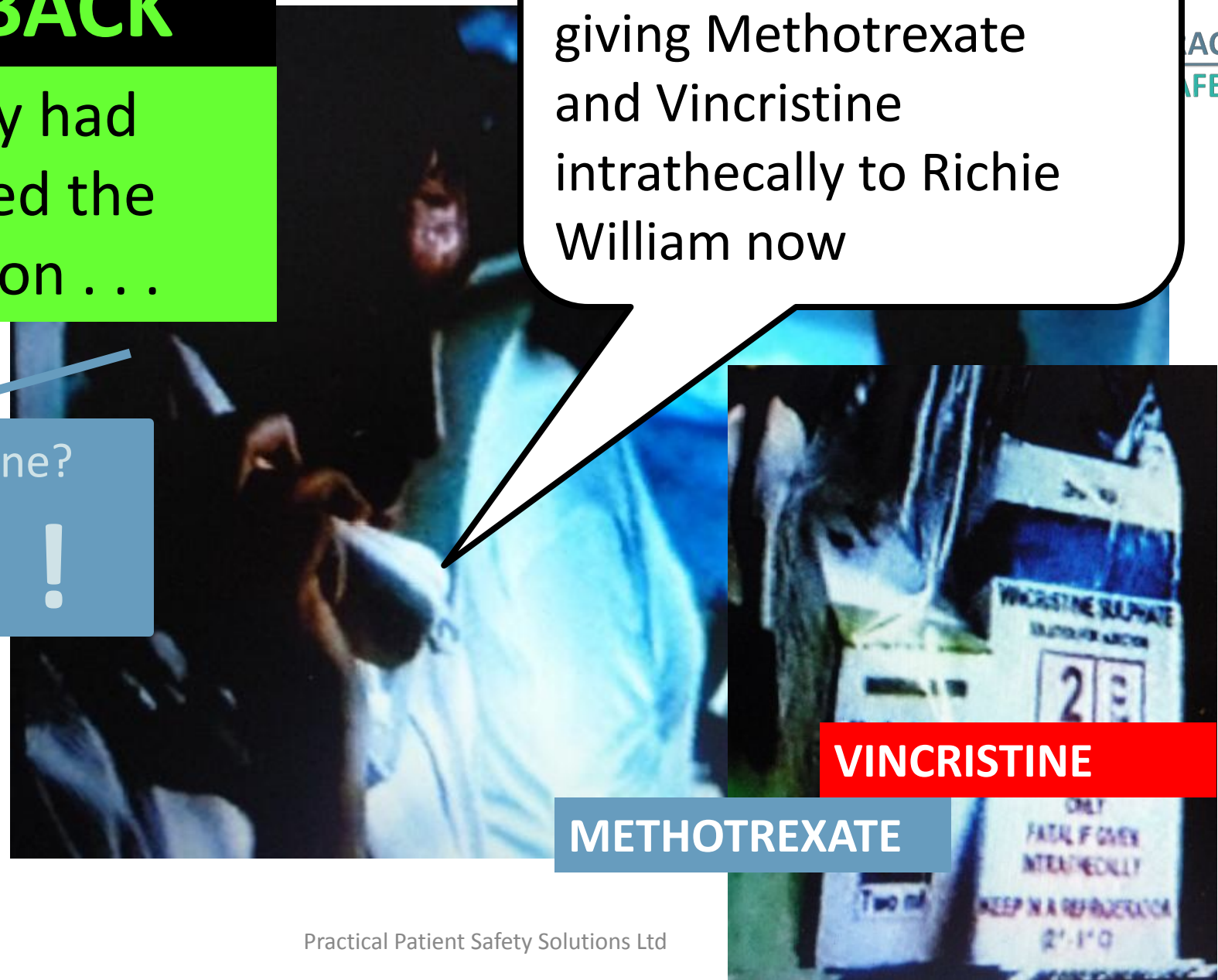
PPSS have studied many transcripts and recordings of accidents in safety critical industries. There are often consistent themes/ phrases and words which contribute to the “error chain” in adverse incidents.

The purpose of the next slide is to maximise the learning potential from this incident (based on non safety critical terminology which has been used before in other industries).

'READ BACK'
If only they had summarised the conversation . . .

So, just to confirm, I am giving Methotrexate and Vincristine intrathecally to Richie William now

Vincristine?
NO !



VINCRI...

METHOTREXATE

The big picture



People,
equipment
and physical
spaces
interact



- The role of the individual – “Active errors”
How to mitigate - **READ BACK/ACTIVE IDENTIFICATION**
- The role of the system – “Latent errors”
How to mitigate – **SOP/EQUIPMENT – ISO 80369-6 NRFIT**

Thank you